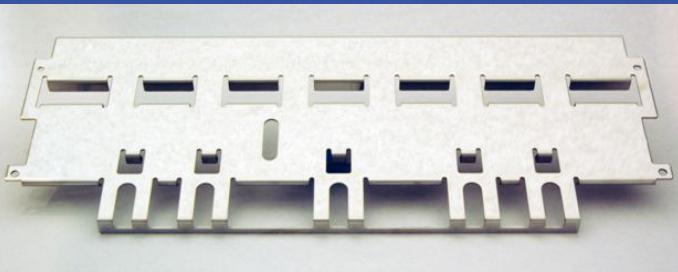


HPM

HEROLD PRECISION METALS



A Closer Look

HPM works with leading companies in the markets they serve who have high standards for Price, Quality, and Service.

We operate state of the art equipment to maximize production efficiency and precision.

At HPM we have experienced personnel in all key positions; strong leadership, account management and highly skilled operators.

Speed counts: HPM is responsive and fast.

- Quotes 1-3 days
- Prototypes 1-3 days
- Production 10-14 days

HPM is fast, but not at the expense of quality. Our customers consistently give us high marks for quality, especially when it comes to quality processes and documentation.

Industries Served

HPM proudly serves a diverse customer mix focusing on high technology industries:

- Computer Peripherals: Networking/Storage/ Communications/CD Duplication
- Self Service Machines: ATM, Lottery, Ticket Dispensing, Movie CD
- Gaming and Entertainment
- Telecommunications
- Military Defense
- Aerospace
- Scientific Test & Measurement
- Printing Equipment
- Acoustics and Audio
- Medical Appliance Devices
- Security and Surveillance
- Digital Display and Sign - LCD, LED, OLED
- Flat Screen TV Mounts
- HVAC Control Systems



Modern 100,000 Square Foot Facility



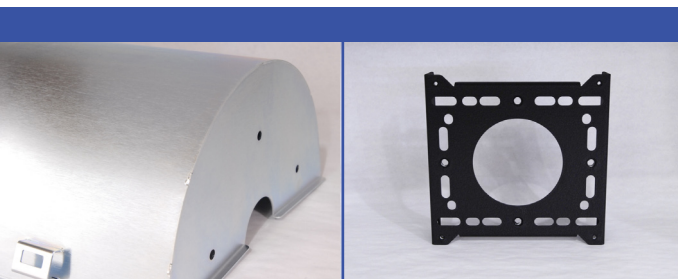
HPM

HEROLD PRECISION METALS

1370 Hammond Road
White Bear Township, MN 55110-5865
Phone: 651-490-5550

www.heroldprecision.com

www.heroldprecision.com



About Us

As a leader in the precision sheetmetal industry HPM is known for rapid prototyping, quick turn production, quality work, and excellence in engineering support. We focus on the fabrication of components and assemblies used in high technology applications. HPM has the facility, equipment, people, and financial resources to add real value to your supply chain now and in the future.



Certifications

ISO 9001: 2008 BSI Management Systems: FM 514672

ITAR Registered: M22755

Department of Defense: CAGE code: 1V5X3



Looking for cost savings?

HPM can help!

Ask us how we achieved 30% cost reduction on this frame.



HPM fabricates over 6.5 million pounds of sheetmetal annually. We work with a variety of materials including steel, stainless steel and aluminum.

Our lasers are fast! HPM has 3 Mitsubishi 4000 KW lasers with auto loading and lights out capability, providing 24/7 service.

Engineering Support

HPM is your X factor for new product development and creative cost reduction solutions. Our engineers work closely with you to understand your manufacturing requirements and bring HPM's expertise to each part we touch and help design.

HPM uses Solid Works, Pro-E, CADKEY and FabriWIN to import your designed files. We use customer supplied 3-D solid models in their original native format to support our manufacturing cells for customer builds.



HPM has a large well lit assembly area in a clean climate controlled environment.

Full Service Fabricator

As a full service sheetmetal fabricator our capabilities include metal cutting, punching, forming, welding, hardware installation and value added electro mechanical assembly. HPM excels at tight tolerance precision sheetmetal components and assemblies/enclosures. However, if you need a simple bracket we are happy to provide that as well. HPM is Flexible! We will work with you on low volume and high volume production runs. We have a dedicated production cell for rapid prototyping and our facility has plenty of space for assembly and packaging operations.

Our Facility at a Glance

Facility: 100,000 sq. ft.
Employees: 100 Employees working 2 Shifts
Brake Presses (23 presses) up to 14'
CNC Laser, (6 lasers) 1500 to 4000 KW with auto loading capability
CNC Turret Punch (7 punch stations)
Hardware Installation (10 systems)
Welding: Tig/Mig (8 stations)
Deburring: (3 Timesaver systems)
In-House Machining
Electro-Mechanical Assembly 20,000 Sq. Ft
Inventory Management Solutions
Dedicated Prototype Cell



NEW! VIRTEK LaserQC 2D Parts Inspection Scanner (SPC, FAI, Part Reverse Engineering)